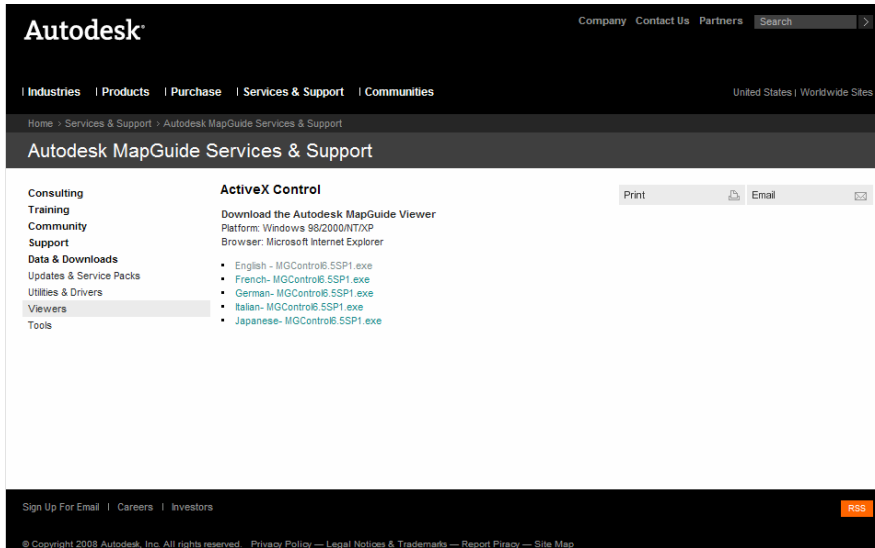


Steps to download the software to view the graphics within the “City of Hilliard’s Interactive Mapping”

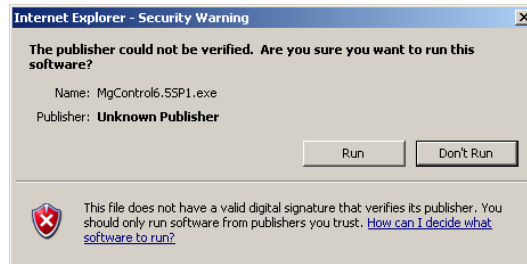
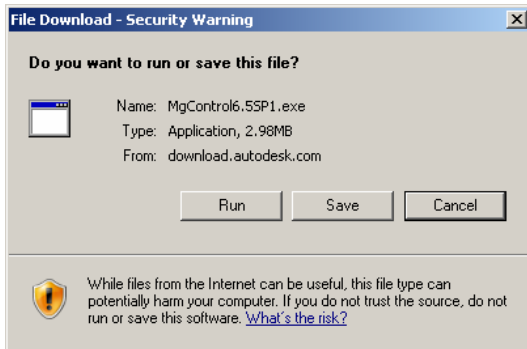
Step 1.

Choose language (English):



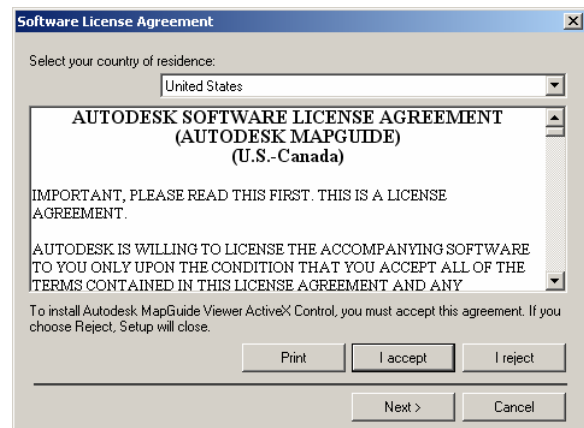
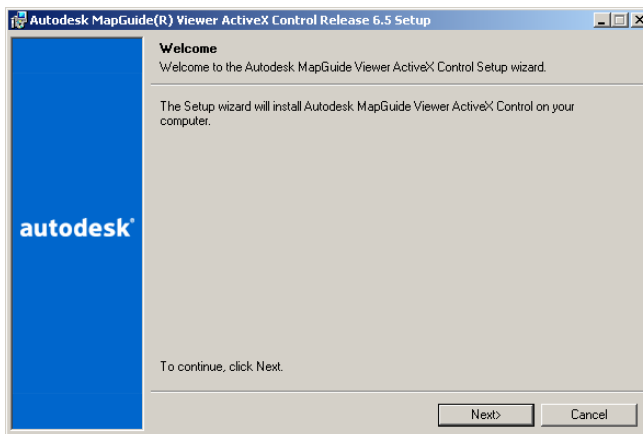
Step 2.

Choose to Run the application. Security Warning – click Run:



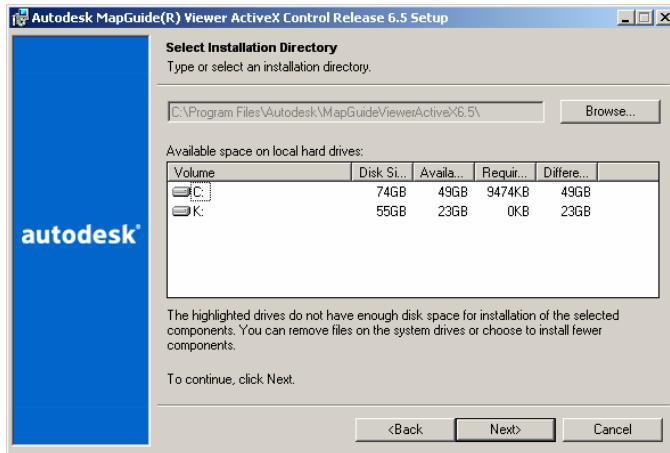
Step 3.

Click “Next”, then “I accept”, then “Next”



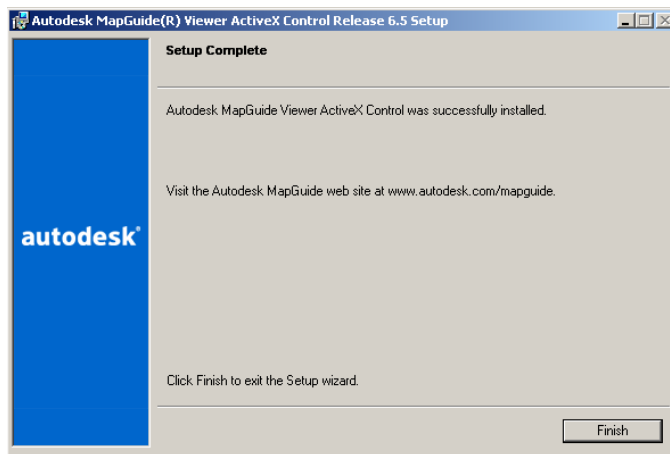
Step 4.

The default directory is fine, click “Next”

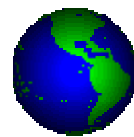


Step 5.

Click “Finish”



Once these steps are completed, you can continue to the spinning globe and begin to use the interactive mapping.



This is a one-time download, however; it will need to be repeated only if the city has upgraded the mapping software, (which typically happens annually).